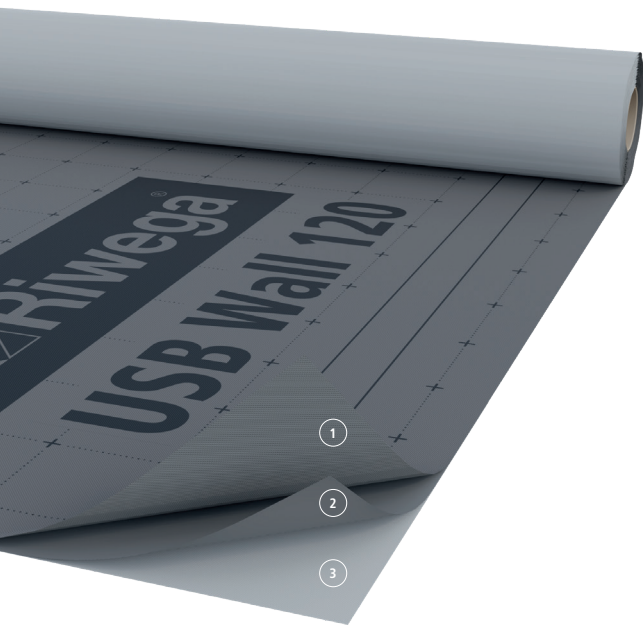
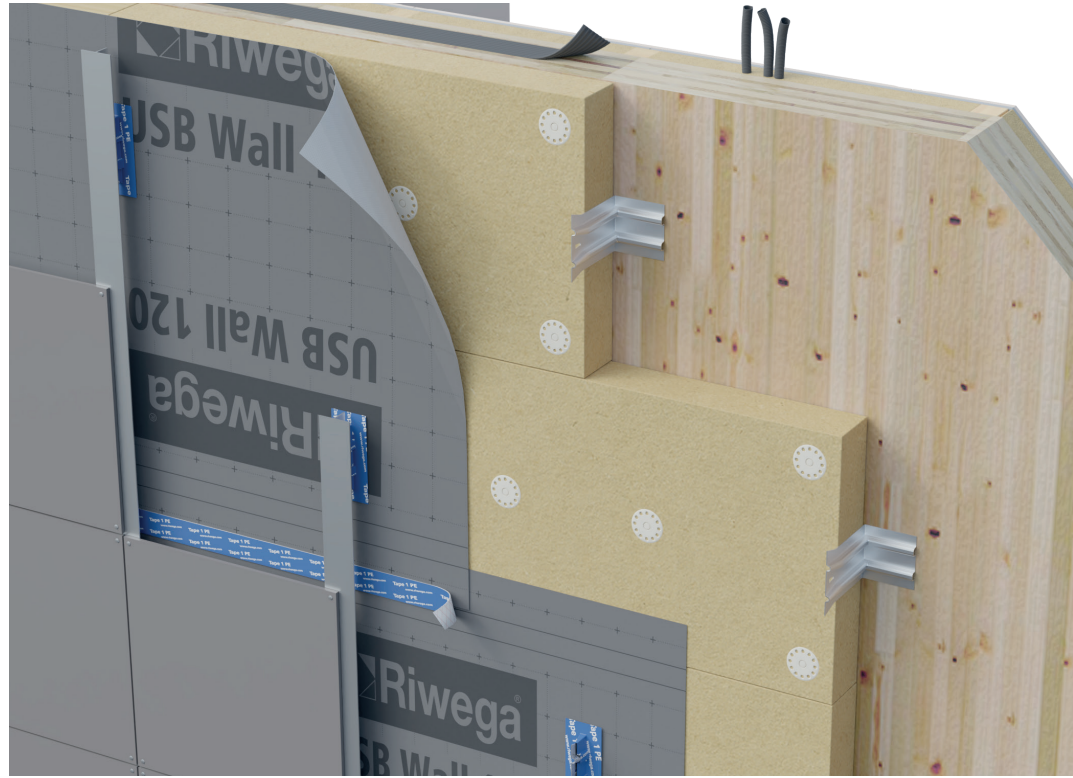


USB Wall 120

QUICK OVERVIEW: STRENGTHS

The essential membrane for ventilated facades with continuous cladding

- Highly breathable, water tight membrane
- Guarantees wind tightness of the insulation of ventilated facades with continuous cladding
- Available in 3m height to speed up laying time



Composition:

- 1 Protective UV stabilized, water repellent layer in PP
- 2 Functional film in PP
- 3 Protective layer in PP

Codes and measures

Code	Code TOP SK	Width (m)	Length (m)	Pallet (m²)
02010090	02020121	1,5	50	1500
020100900	-	3,0	50	3000

Features:



Classification:



Technical data sheet

Material	PP.PP.PP	
Film	PP	
Colour	Grey	
Use underneath PV panels	NO	
Mass per unit area	EN 1849-2	120 g/m ²
Thickness		0,65 mm
Sd value	EN ISO 12572	0,02 m
Water vapour permeability	EN ISO 12572	~ 1000 g/m ² /24 h
Watern column	EN 20811	>200 cm
Heavy rain test	TU Berlin	passed
Resistance to water passage	EN 1928 (Met. A)	W1
Tensile strength MD/CD*	EN 12311-1	260 / 155 N/50mm
Elongation MD/CD*	EN 12311-1	60 / 70 %
Tear resistance MD/CD*	EN 12310-1	105 / 140 N
Fire reaction class	EN 13501-1	E
UV stability		3 months
Temperature resistance		-40°/+100°C

*MD = longitudinal CD = transversal

Riwega Srl is not responsible for negligent and improper use of its products